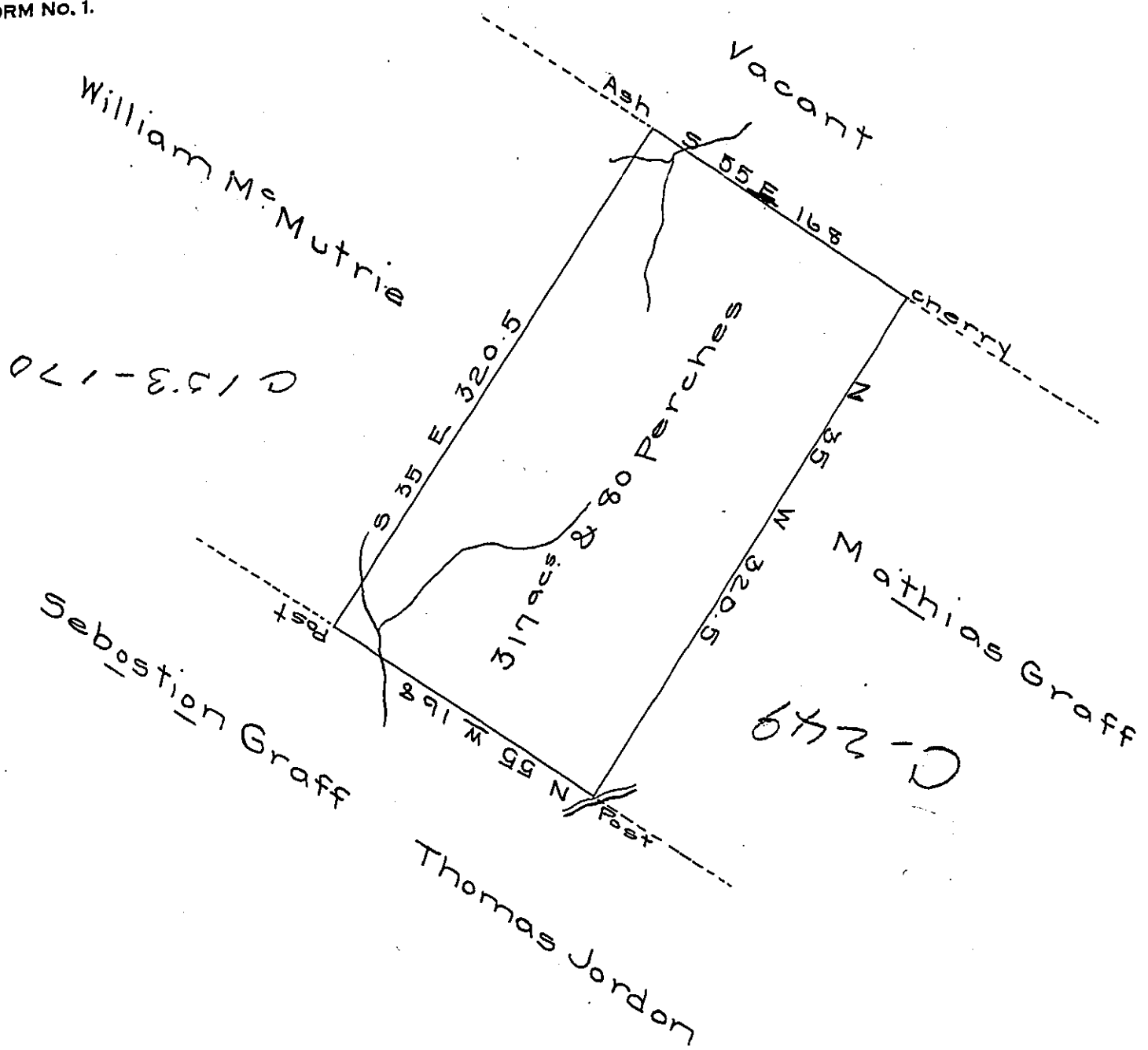


FORM NO. 1.



Surveyed to William Sample on the 4<sup>th</sup> day of July 1784 the above described tract of land containing three hundred and seventeen acres and eighty perches with the allowance of six p. ct. & Situated and lying on the North Side of Allegeny Mountain and on the heads of a run that emtys into Conemah - on the South side, and adjoining lands of Mathus Graff, William M<sup>e</sup> Mutrie, Sebastion Graff and Thomas Jordon in Bedford County by warrant of the 10<sup>th</sup> day of Nov<sup>r</sup> 1773.

George Woods D.S.

John Lukens Esq<sup>r</sup>  
Sur<sup>r</sup> G!

IN TESTIMONY that the above is a copy of the original remaining on file in the Department of Internal Affairs of Pennsylvania, made conformably to an Act of Assembly approved the 16th day of February 1833, I have hereunto set my hand and caused the Seal of said Department to be affixed at Harrisburg, this second day of January 1907.

*Isaac P. Brown*  
Secretary of Internal Affairs.